

# Mater Christi Catholic Primary School Newsletter

Volume 12



15 May 2020



## **SCHOOL MANTRA 2020**

*"Do small things, with great love". Mother Teresa*



Dear Families

### **Sunday Reflection**

Being Christian means we follow Christ and Christ lives in us. What does this mean then for the way we live our lives as a witness to Christ who lives in us? We are an Easter people; people of love, hope and joy, filled with the power of the Holy Spirit. We are called to a love originated in the New Testament from Jesus. (1 Peter 3:15). When did I make Jesus real today?

I hope all Mums, Grandmothers and special women had a wonderful day last Sunday. I'm sure your children treated you especially well on Sunday. I came across the following written about Mothers by Abigail Wortman, and I would like to share it with you.

*On the first day of first grade, I stood by the front door with butterflies in my stomach. I voiced my biggest concern to my mother: "How will I make friends?" Crouching in front of me, she handed me advice I carry with me to this day: "Be Switzerland." Be friends with everyone. Treat everyone equally and fairly. For all of my 20 years, I have lived by these words. Soon I will graduate and become a part of the real world. And on that first day, nervously facing new responsibilities, I know I will whisper two words to myself: "Be Switzerland".*

What words do you offer your children that help them to be the people you hope they will be?

### **INFORMATION FOR PARENTS REGARDING A FULL RETURN TO SCHOOL**

As restrictions have continued to be lifted and 73% of our students have now returned to classroom learning, it has been heartening to see the excitement of students and teachers alike as our school buzzes with life. I am grateful to the staff who continue to help those students who are still a little anxious in resuming life at school. When we actually think about it, most students have only been at school for approximately 6-8 weeks (when you take out swimming and the COVID-19 restrictions). Some only five weeks. This return for all students and their teachers will be like starting school again.

While it has been challenging for all in our community to adapt to the ongoing changes, there is an overwhelming sense of gratitude for the leadership at the Federal, State and CEWA level and the shared community responsibility that has meant children can return to school, parents can return to work and that we can all begin to enjoy time together again.

Mater Christi Catholic Primary School  
340 Yangebup Road  
Yangebup WA 6164  
PO Box 3077 Success WA 6964

Telephone: (08) 6173 9000  
Email: [admin@mcps.wa.edu.au](mailto:admin@mcps.wa.edu.au)  
Absentees Email: [absentee@mcps.wa.edu.au](mailto:absentee@mcps.wa.edu.au)  
Website: [www.mcps.wa.edu.au](http://www.mcps.wa.edu.au)

We hope that you have felt supported to decide whether to send your child to school or to engage in their learning from home, depending on your own family's circumstances. Mater Christi staff have certainly done their very best to deliver a quality Catholic education to all our students, irrespective of whether they were being taught at school or at home.

Since the start of Term Two, we have been actively planning for all students to return to classroom learning as soon as recommended by Government and health authorities.

**On 11 May, following a comprehensive School Readiness Review of all Catholic schools in Western Australia, Catholic Education Western Australia has determined that Catholic schools across the State will return to classroom teaching and learning for all students from Monday, 18 May.**

This recommendation aligns with the latest advice from both State and Commonwealth Governments and has been made with the safety and wellbeing of students, staff and our whole community as the first priority.

**Students may continue to learn from home if they, or a member of their immediate family, are immune-compromised or are otherwise considered at-risk medically. Parents who plan to keep their children home to continue learning remotely are asked to please contact the school. These students will continue to be supported by school staff, however from 18 May, these students may not be engaged in the same learning program delivered in classrooms.**

**Parents who plan to keep their child home to continue learning remotely are to seek medical advice and will be required to provide medical evidence to the school.**

If your child is worried about attending school due to COVID-19, please remember you can find resources prepared by CEWA's Psychology Team here <https://covid19.cewa.edu.au/wellbeing/>. These may assist in supporting your child at this time, and we would encourage you to speak to your child's teacher if you have concerns about how they are coping with being back at school or would like to know more about support available.

I am certain you share our staff's joy and gratitude that our students are able to return to school to resume classroom learning together.

***Please read the two Information Sheets for Parents further in the Newsletter.***

**Morning Drop off and Afternoon pick up (will continue for weeks 4 & 5)**

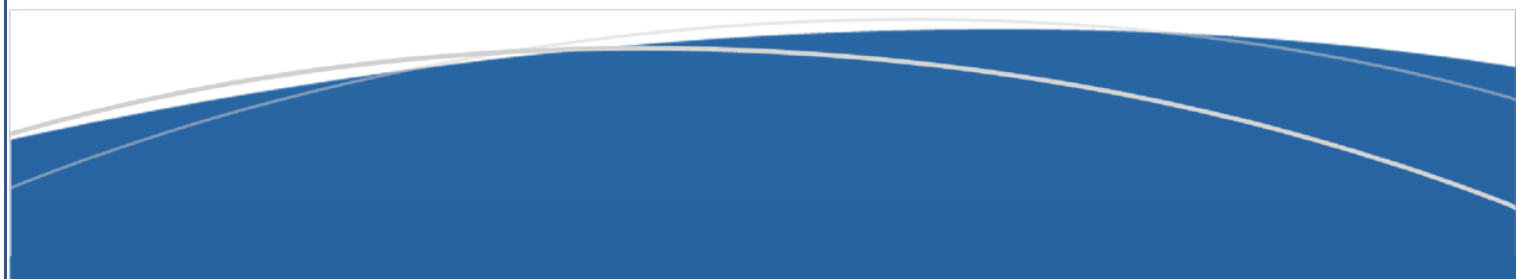
I can appreciate how difficult the situation we find ourselves in, actually is and thank you for acknowledging that it isn't easy from our end too. Thank you also for making sure you adhere to the road rules as well as the speed limit when in a school zone for the safety of all. **I remind parents again PLEASE ensure that you are adhering to the road rules when entering and exiting the roundabout at Yangebup.** Families who have children in 3-year-old, Kindy, PP and/or Year One have adjusted brilliantly to the change in procedure. It would be lovely not to have to stand near the road each morning or afternoon because everyone is adhering to our drive through process. If you are still having difficulty with drive through the best advice I can give to parents is:

- You do not need to sit in drive through from 1.45pm until 3.05pm each afternoon. This is a long wait and then clogs up the traffic for other motorists and local residents, especially at the roundabout.
- For afternoon pick up come around 3.20pm – 3.30pm. You will have a much quicker run in collecting your child/ren

All families that have requested a Family Name Card to use during drive through have received one. If you require one, please contact the School Office.

**Sick children**

If your child is displaying flu-like symptoms, or is sick in any other way, please do not send them to school. If your child becomes ill at school, we will contact you and ask that you come and collect your child as soon as you can take them home. I appreciate your cooperation.



## Homework

To assist students and teachers in the transition to full attendance at school, there will be no homework next week and of course in Wellness Week – week five. The expectation is that ALL students will continue to read their PM readers, Lexile readers, Library Books and books from home each night.

As members of our school community, we ask that you join us in continuing to pray for those affected by the COVID-19 pandemic at home and abroad.

## Even more thank yous!

This week, the staff were lucky enough to share morning tea on thanks to the Fielding and Nair families. We have all been thoroughly spoilt with delicious treats to keep our energy levels up during the day. We are very grateful for your generosity.

Also, a very big thank you to the McEntee family for sharing your Mobile Café with us all on Tuesday. All staff were treated to a hot takeaway coffee from the Cappuccino Xpress Mobile Café. Kymme was busy pumping out 60 flat whites and cappuccinos! We loved the idea and it was lovely to be acknowledged.





## **Changes to Drop Off and Pick Up**

Thank you so much for your patience with drop off and pick up during the first two weeks of school. It is heart-warming to hear acknowledgement from families that in this unprecedented time, with so much beyond our control, we are all doing our very best. We have never been in a situation where parents are unable to park and walk into school with their child/ren and engage with staff and other parents. All staff assisting in drive through have loved this part of our day and I am constantly told via email or in drive through that you also love being welcomed by a cast of thousands each morning and afternoon. So, it has definitely been a win/win for all.

Due to the increased number of students attending school and that parents are still unable to enter the school grounds, the pressure placed on drive through has been immense. Without your understanding, respectful manner in taking turns to enter drive through and your patience, together with the incredible work and support of staff, none of this would have worked. GREAT JOB MATER CHRISTI!!

**Commencing Monday 11 May, the following Before and After School Pick up/Drop Off arrangements for families will be in place:**

### **FAMILIES WITH CHILDREN in Kindy, Pre-Primary and Year One:**

- Turn into Pelican Ramble from Osprey Drive then on to Pioneer Drive and left into Yangebup Road
- Enter main car park of the school
- Drive past Pre-Primary and Administration Office
- Pick up child/ren from grassed area outside of the Year Six classrooms
- This will be conducted as per our normal drive through with children directed to pick up points 1, 2, 3, 4, 5 and 6 marked by orange cones. A staff member will be at each cone.
- Once children are collected, drive around the Community Centre and out the front gate
- Turn right into Pioneer Drive

### **PLEASE SEE THE MAP BELOW**

Please be advised that access to Osprey Rd directly via Yangebup Rd will not be possible during these times. If it is raining, the procedure above will be adjusted for pick up to occur outside the Community Centre as children will be assembled inside the Centre. Cars are to continue around to the front of the Community Centre and collect your child/ren from pickup points 1,2,3,4,5 and 6 marked by orange cones.

Siblings of children in Kindy, PP and/or Year One will also assemble for pickup on the grassed area outside the Year 6 classrooms.

**FAMILIES WITH CHILDREN in Years 2-6 ONLY** will be asked to use the normal drive through as follows:

- Enter Yangebup Road
- Turn right into Drive Through (normal drive through procedure)
- Exit drive through onto Yangebup Road

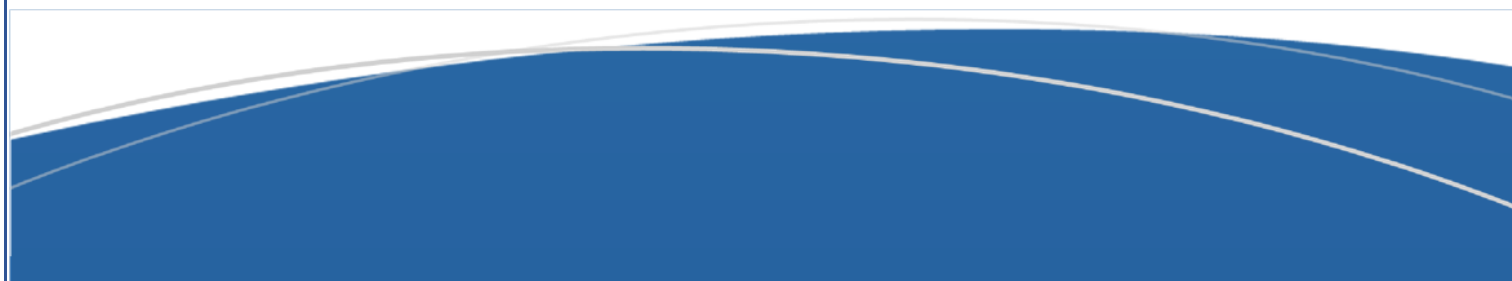
### **PLEASE SEE THE MAP BELOW**

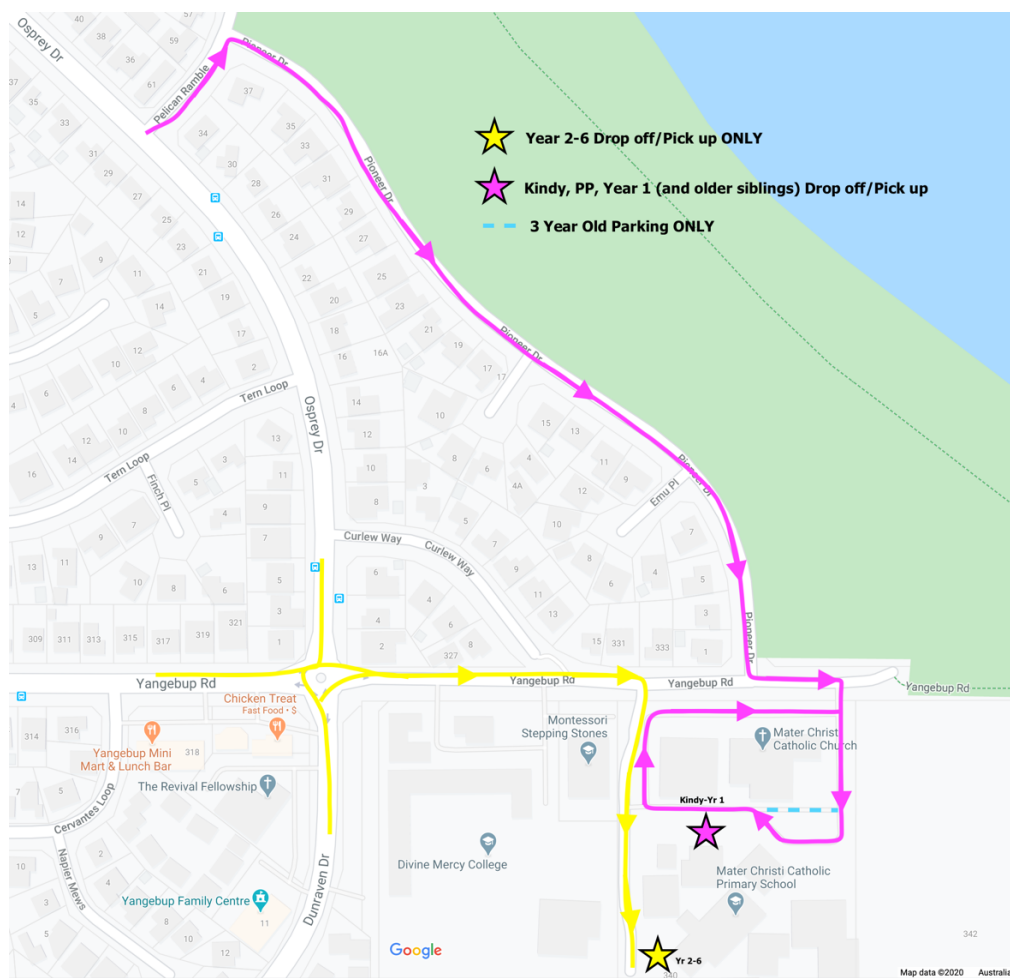
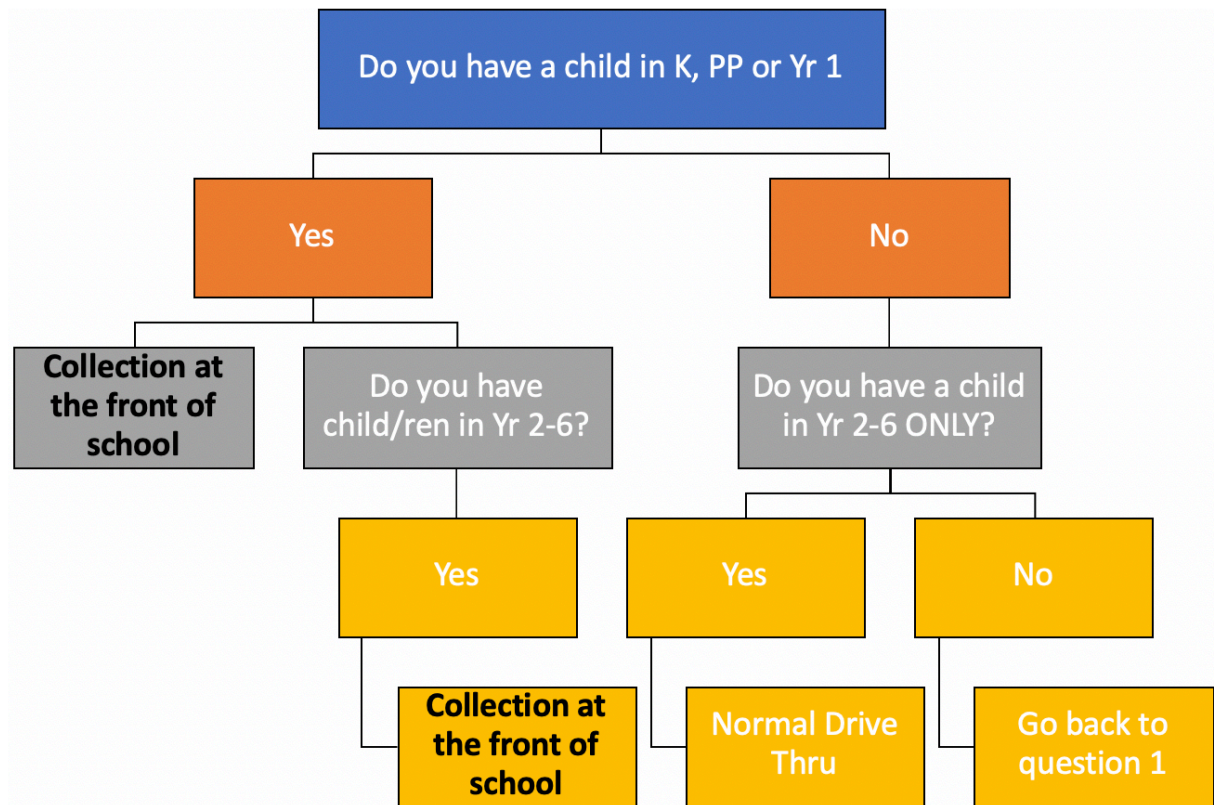
### **FAMILIES WITH CHILDREN in 3-Year-Old Kindy (Tuesdays ONLY):**

- Turn into Pelican Ramble from Osprey Drive then on to Pioneer Drive and left into Yangebup Road
- Enter main car park of the school
- Drive past Pre-Primary
- Park outside the Pre-Primary **on the Church side**
- Walking across to drop off/collect their child from the gate at 3-Year-Old Kindy
- Parents remember to maintain social distancing
- Exit main carpark
- Turn right into Pioneer Drive

### **PLEASE SEE THE MAP BELOW**

It is important that if you have arranged for a grandparent or alternative person to drop off/pick up your child/ren that they are aware of these changes.





## Religious Education

### Making Jesus Real

Next week across the school and we invite you at home to celebrate Laudato Si Week. Pope Francis has called on all people to celebrate the 5th anniversary of the publication of Laudato Si. Laudato Si' is an encyclical written by Pope Francis, it was published on the 18 June 2015. Encyclicals are open letters written by the pope.

Laudato Si' discusses the damage being inflicted on the Earth by humans and calls on 'every person living on this planet' to make urgent changes to our lifestyles and how we consume energy in order to protect the planet. It deals with many environmental issues including pollution; climate change; water; loss of biodiversity and decline in the quality of human life.

In his letter, Pope Francis implores us to work together to create a better world for future generations and asks us to make the necessary changes in our lives in order to take care of, respect and value our 'common home'.

**Click here for Laudato Si' animation for children explaining the encyclical letter**

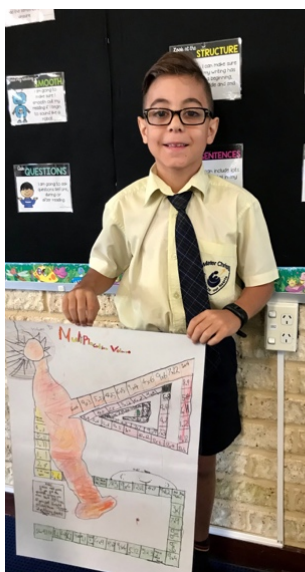
<https://www.youtube.com/watch?v=KOgF2Kgel6k>

### Sacramental Program

Further to the Archbishop Timothy Costelloe's directive that "all celebrations of the Sacraments that we planned for 2020 be temporarily suspended", the Sacramental workshops scheduled are on hold until further notice. The trybooking website is not available for online bookings until further information becomes available. Thank you.

### What's Happening in Year 4 This Term?

Year Four have ventured to the Year 4C and 5A classrooms at the start of this term. We have thoroughly enjoyed using the new flexible learning furniture. We have been learning online and have become really good at using a device to follow our daily schedule and upload our work for our teacher to check. We have been working hard to infer during reading. Even though we haven't been learning face-to-face with our teachers, we have watched videos of our teachers explicitly explaining hard concepts such as written division and adverbial phrases. This has helped. Our specialist teachers have also given us tasks to complete. We have enjoyed listening to our teachers read our class novel in a prerecording every day.





# Return to School Quick Reference Guide

## ADVICE FOR PARENTS

Effective 18 May 2020

**From 18 May, all Catholic school students in Western Australia are required to attend school unless they are unwell or have a medical referral to continue their learning from home.**

This decision aligns with WA Government advice and has been informed by the results of a comprehensive School Readiness Review undertaken by Catholic Education Western Australia on Monday 11 May.

Since the 'soft start' to Term Two, Catholic schools have been actively planning to return to classroom teaching and learning while supporting students who are learning from home. Across WA, more than 80% of Catholic school students are now back at school.

As the health and safety of all students and staff remains our highest priority, additional cleaning and hygiene measures are in place and some school practices have been altered to comply with advice regarding physical distancing.

Knowing this is a uniquely challenging time for all of us, Catholic schools will continue to focus on the care and wellbeing of students, staff and families as we journey together to manage the risks of COVID-19 in our community.



### Student attendance

All students are required to attend school from 18 May unless they are unwell, have a medical referral to learn from home or live with a family member who is medically vulnerable.

#### Students with a medical condition

Students may continue to learn from home if they are immune-compromised or are otherwise considered at-risk medically.

- Parents who plan to keep their child home to continue learning remotely are to seek medical advice and will be required to provide medical evidence to the school. Students approved to learn from home will continue to be supported in their learning.
- Where a student's pre-existing medical condition is already known to the school, no medical evidence is required

#### If a child is unwell

Students who are unwell should stay at home. Parents are asked to seek medical advice if their child exhibits symptoms of COVID-19. Normal processes for advising the school of a child's absence will apply.

#### Student with medically vulnerable family members

Students may continue to learn from home if a member of their immediate family is immune-compromised or medically vulnerable.

- Parents who plan to keep their child home to continue learning remotely are asked to contact the school Principal and provide medical evidence to support their request.



### School facilities

#### School canteen

School canteens can continue to provide a takeaway service and may provide limited dine-in service for up to 20 people, where they meet physical distancing requirements.

#### School library

School libraries are able to open with staff and supervisors observing required physical distancing.

#### Swimming pool

Access to school swimming pools is permitted for up to 20 people in total, ensuring physical distancing, health and hygiene practices are observed.

#### Uniform shop

Due to the variable arrangements in place at schools, parents and caregivers are asked to contact the school to determine arrangements for their school uniform shop. Where a uniform shop is open, the following considerations will apply:

- Until further notice, children should not be 'trying on' uniforms for fitting purposes.
- Where possible, parents should have the opportunity to make a specific appointment time to attend the uniform shop to avoid excessive numbers of people gathering in the store. If this is not possible, restrictions should be in place to limit the number of people in the store to allow for appropriate physical distancing.



- If parents are unable to access new uniforms for their children they should contact the school to discuss.
- Increased cleaning and hygiene practices are in place to ensure that uniform shops meet the required AHPPC guidelines.



## Teaching and Learning

### Semester One reporting

School systems and sectors across the country have been offered flexibility in relation to reporting for Semester One, 2020. Catholic Education Western Australia is awaiting advice from the Australian Government with regard to their requirements. Parents will be notified as soon as this advice has been received.

Face-to-face parent / teacher meetings will not occur until further notice.



## School activities

### In-school activities

Incursions for senior school students for purposes of course completion may proceed. However, they should not exceed 20 people in total, and supervisors and staff are required to maintain physical distancing.

### Excursions and camps

Excursions for senior school students for the purpose of course completion may proceed. However, they should not exceed 20 people in total, and supervisors and staff are required to maintain physical distancing.

### Assemblies, school Masses and school community events

Assemblies, interschool activities and school based extra curricular activities will not recommence until further advice is received from the Department of Health. However, co-curricular activities may proceed.



## Health and hygiene

### Keeping students and staff safe

The health, safety and wellbeing of students and staff is our highest priority. Additional cleaning measures are already in place in all Catholic schools.

Unwell students or staff are to remain at home until they receive a medical clearance to attend school.

### Physical distancing

Whilst physical distancing is not required for students in schools, students are actively encouraged to do so wherever practical. Physical distancing is still a requirement for all adults.

### Parent and caregiver access

Parents and caregivers are advised that they are not permitted to exit their vehicles when dropping off or collecting their children.

If parents and caregivers are walking their children to and from school, they should undertake their drop-off or pick-up at the school gates. Schools are required to make arrangements for parents and caregivers to drop and collect students at designated locations.

### Personal hygiene:

- Schools are ensuring arrangements are in place for regular and thorough hand-washing for students and staff.
- Posters and information regarding handwashing and cough-sneeze hygiene are also displayed in schools.



## School Visitors

### School meetings

School Boards, Parents and Friends and staff meetings may resume after school hours for up to 20 people where physical distancing and enhanced cleaning and hygiene protocols are observed.

### Parent and caregiver meetings

Pre-arranged meetings with parents and caregivers are permitted for purposes of new enrolments, pastoral care case management, student behaviour and engagement, medical reasons and other emergencies.

### School visitors

Visitors to school sites should be limited to essential health, wellbeing, case management and maintenance providers, and occur only when the school can assure adherence to physical distancing requirements and enhanced cleaning requirements. Contact with the broader school population must be kept to a minimum.

### Use of school facilities

While service providers and community groups who have previously had access to facilities will be eager to re-establish activities, the current restrictions and health advice do not allow non-school related use of school facilities at this time.



## Remaining prepared

Catholic schools will continue to review and respond to cleaning and hygiene protocols in line with advice from the Department of Health

In the event of a confirmed case of COVID-19, any temporary school closure will be advised by the Department of Health and the school will enact its Six Step Response Plan in the event of a confirmed case.





Government of **Western Australia**  
Department of **Health**

# Novel Coronavirus (COVID-19) Update

Dear parents and students,

## Updated Advice from the Chief Health Officer

Schools have now been open for students since the commencement of Term 2 and I am very encouraged by the way the school community, parents and students are caring for their health and attending school in a responsible way. This is building community confidence in the safety of our schools with the overall attendance rate reaching over 73%

WA recently recorded 14 days with only 2 reported cases, both of whom were rapidly identified and are in isolation. With over 56,000 negative tests and only 7 active cases, there is no evidence of community transmission.

The WA State Government has recently announced further decisions about the easing of restrictions in our state as part of a phased approach in the management of the pandemic. These decisions have been based on public health advice and will continue to be carefully monitored in the weeks ahead.

Public health measures already in place to protect the community will remain a focus during this time, including broad testing, comprehensive contact tracing when a case is identified, isolation and quarantine measures where required, and education about social distancing and hand hygiene. Plans remain in place to ensure immediate response to any reported infections in the school setting when needed to prevent the spread of any illness.

I continue to recommend that schools should remain open to all students and families should be encouraged to return their children to the classroom. If your child is more vulnerable due to health problems or you have a vulnerable adult living in your home, then I would recommend seeking advice from your specialist medical practitioner as to whether returning to school remains the best option for you.

We need to remain diligent during this time and I encourage you to please make sure you keep your child home if they are unwell and, if you or your child have fever, cough or cold symptoms, get tested for COVID-19. We should all continue to follow the social distancing guidelines when interacting with other parents, teachers and school staff. Thank you again for your leadership and support during this challenging time.

Yours sincerely

**DR ANDY ROBERTSON**

Chief Health Officer

May 2020

## Community News

**ACADEMIC  
& MUSIC  
SCHOLARSHIPS**  
YEAR 7 | 2021 & 2022  
**Apply Now**

Applications are made online directly  
from the College website  
[www.emmanuel.wa.edu.au/scholarships](http://www.emmanuel.wa.edu.au/scholarships)

122 HAMMOND ROAD, SUCCESS WA 6164 | 9414 4000 | WWW.EMMANUEL.WA.EDU.AU